

## RESEARCH NETWORKS

### CARETECH OWL

The Center for Health, Social Welfare and Technology at HSBI focuses on the development and use of technologies in the fields of nursing, therapeutic care and social welfare for patients and for the public benefit.



The aim of the center is to involve patients, their relatives and professionals in all phases of the product development cycle to design top solutions for health preservation and improvement and to enable participation in all areas of life.

➤ [www.caretech-owl.de/](http://www.caretech-owl.de/)

### SMART RECYCLING FACTORY



Developing the landfill site Pohlische Heide into the research center of the future.

The aim of the center is to establish a dynamic, forward-thinking, and resource-efficient hub for the future in the field of circular economy.

➤ [smart-recycling-factory.com/](http://smart-recycling-factory.com/)

### RAILCAMPUS OWL

Connecting leading experts in railway technology from science, industry and public administration to create a unique sustainable ecosystem for intelligent and efficient railway technology.



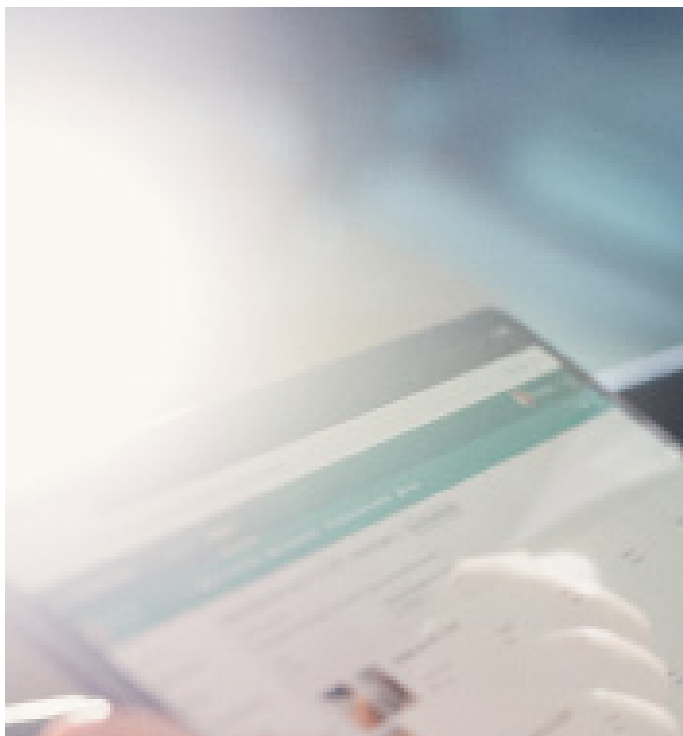
➤ [railcampus-owl.de/](http://railcampus-owl.de/)

### JAI



The „Joint Artificial Intelligence Institute“ focuses on evolving AI from a simple tool into a competent human-centered partner capable of tackling real-world challenges across specialized domains.

➤ [jaii.eu/](http://jaii.eu/)



### HRK RESEARCH MAP

HSBI is represented on the research map of the German Rectors' Conference (HRK) with the following three research priorities:

- Education and Healthcare Research in the Health Sector
- Intelligent Technical Energy Systems
- Materials Research

➤ [www.forschungslandkarte.de/en/research-map-for-applied-sciences/](http://www.forschungslandkarte.de/en/research-map-for-applied-sciences/)

### In 2025, HSBI recorded

- over 16 m € in external funding
- over 320 publications
- over 100 doctoral students

# HSBI

Hochschule  
Bielefeld  
University of  
Applied Sciences  
and Arts

## Research@HSBI



[hsbi.de](http://hsbi.de)

## RESEARCH PROFILE

With around 10,000 students, HSBI is one of the largest universities of applied sciences in OWL. In the faculties of Design, Health, Engineering and Mathematics, Social Work and Economics, and at Campus Minden in Architecture, Computer Science, Mechanical-, Civil- and Industrial Engineering, HSBI conducts applied research tailored to the challenges and needs of the region.

The research priorities of HSBI are represented by research institutes and networks, which also provide the structure for facilitating and maintaining international collaborations to further enhance the development and innovation of practice- and science-based solutions.

The research institutes bring together internal expertise at HSBI within and across disciplines, whereas in the research networks HSBI additionally cooperates closely with other regional universities, transfer and public administration partners.

## RESEARCH INSTITUTES



### INSTITUTE FOR EDUCATIONAL AND HEALTH-CARE RESEARCH IN THE HEALTH SECTOR (INBVG)

Main research areas:

- Educational Research
- Health Services Research

➤ [www.hsbi.de/inbvg](http://www.hsbi.de/inbvg)



### INSTITUTE OF SYSTEM DYNAMICS AND MECHATRONICS (ISYM)

Main research areas:

- Human Mechatronics & Medical Technology
- Intelligent Systems
- Connected Mobility

➤ [www.hsbi.de/isym](http://www.hsbi.de/isym)



### INSTITUTE FOR TECHNICAL ENERGY SYSTEMS (ITES)

Main research areas:

- Renewable Energies
- Electrical Energy Networks
- Smart and Energy Efficient Technologies

➤ [www.hsbi.de/iium/ites](http://www.hsbi.de/iium/ites)

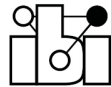


### INSTITUTE FOR DATA SCIENCE SOLUTIONS (IDAS)

Main research areas:

- DataScience: Analysis, Prediction, Anomaly Detection
- AI: Language Processing, Image Understanding
- Optimization & Simulation: Process Optimization, Modeling & Simulation

➤ [www.hsbi.de/idas](http://www.hsbi.de/idas)



### INSTITUTE FOR BUILDING INTELLIGENCE (IBI)

Main research areas:

- Modern, Networked Building Management Systems
- Intelligent Energy and Comfort Solutions
- Forward-looking Smart Home Technologies
- Resource-saving Materials and Construction Methods

➤ [www.hsbi.de/ibi](http://www.hsbi.de/ibi)



### BIELEFELD INSTITUTE FOR APPLIED MATERIALS RESEARCH (BIFAM)

Main research areas:

- Thermal Energy Systems & Sensor Technology
- Formulation Technology
- Thin-film Technology
- Plastics Technology
- Lightweight and Composite Materials
- Materials Testing and Development
- Modeling & Simulation

➤ [www.hsbi.de/bifam](http://www.hsbi.de/bifam)



## RESEARCH SUPPORT

The F.I.T.T.-Team is the central point of contact for research and innovation at HSBI. We provide support on national and international funding programmes, collaborations, ethics and research data management and early career research.

Contact:

➤ [fitteam@hsbi.de](mailto:fitteam@hsbi.de)

Hochschule Bielefeld – University of Applied Sciences and Arts  
F.I.T.T.-Team  
Interaktion 1  
33619 Bielefeld  
Germany



➤ [www.hsbi.de/en/research-and-transfer/research-service](http://www.hsbi.de/en/research-and-transfer/research-service)